

GENERAL NOTE FOR CONSTRUCTION

- ALL RCC WORK SHALL BE CAST WITH M20 GRADE OF CONCRETE (NOMINAL MIX OF 1:1.5:3)
- COARSE AGGREGATE OF 20 mm DOWN SIZE SHOULD BE USED IN CONCRETE MIX ..
- CLEAR COVER TO REINFORCEMENT :
 TO MAIN STEEL OF STEM WALL, COUNTER-FORT WALL AND BUTTRESS : 30 mm
 TO MAIN STEEL OF SLAB BASE : 50 mm ON ALL SIDES .
- UNLESS AND OTHERWISE SPECIFIED ALL DIMENSIONS ARE IN mm AND ONLY WRITTEN DIMENSIONS SHOULD BE FOLLOWED.
- IN ALL CONCRETE STRUCTURES, HOOK LENGTH OF CONCRETE REINFORCEMENT SHOULD BE ATLEAST 75mm.
- IN ALL CONCRETE STRUCTURES, DEVELOPMENT LENGTH (Ld) OF REINFORCEMENT SHOULD BE ATLEAST 50 TIMES THE DIAMETER OF BAR.

ASSAM POWER GENERATION CORPORATION LTD.	
OFFICE OF THE CHIEF GENERAL MANAGER (HYDRO & CIVIL), BIJULEE BHAWAN, GHY-01	
RETAINING WALL STRUCTURE WITH STAIRCASE	
PLAN, SECTION AND REINFORCEMENT DETAIL OF RETAINING WALL STRUCTURE WITH STAIRCASE	
DRAWN BY:	APPROVED BY:
K. TALUKDAR	R. BISWANATH, CGM (H&C)
ORG. NO. CGM(H&C)/INTAKE PROTECTION/KLHEP/2020/03	
DATE	FEBRUARY, 2020

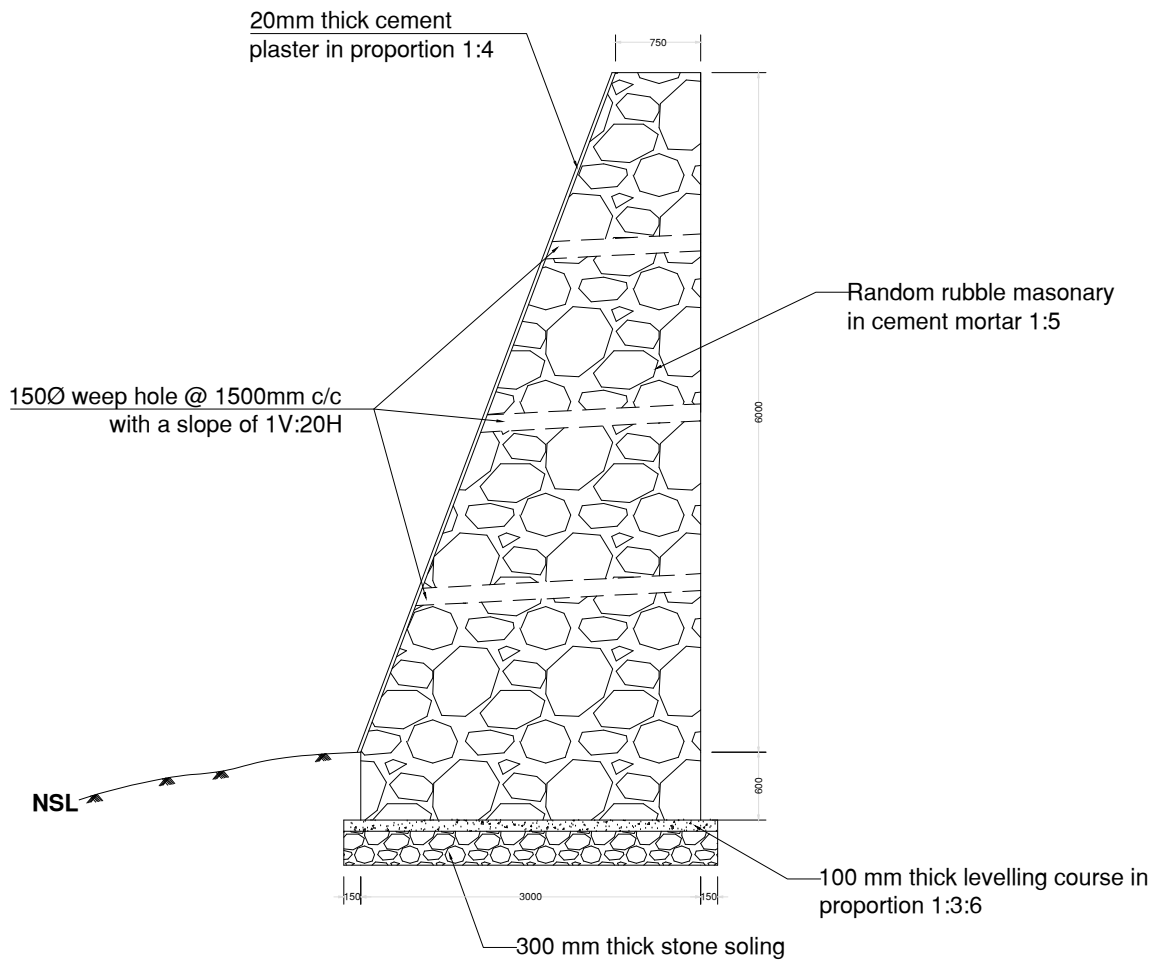
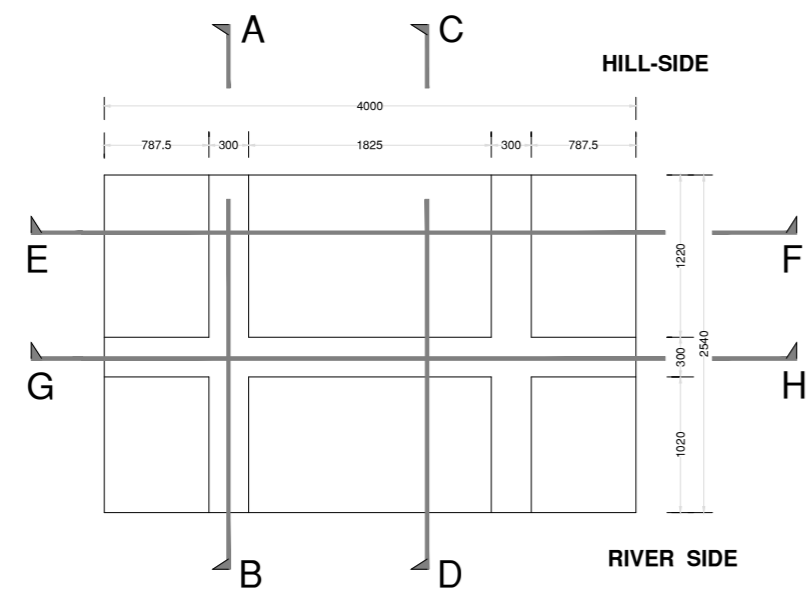
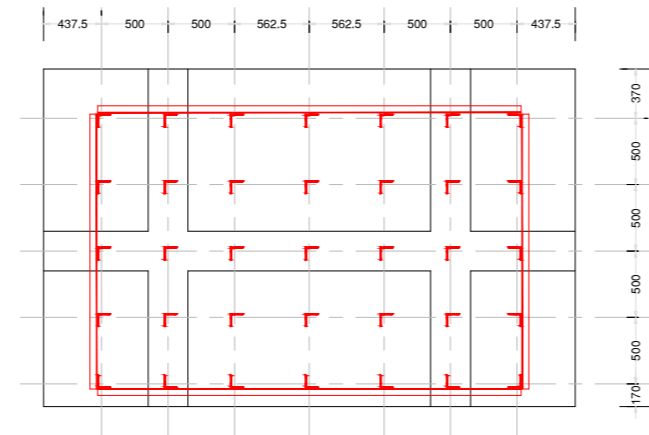


FIG: SECTIONAL ELEVATION OF THE PROPOSED STONE MASONARY WALL NEAR INTAKE STRUCTURE

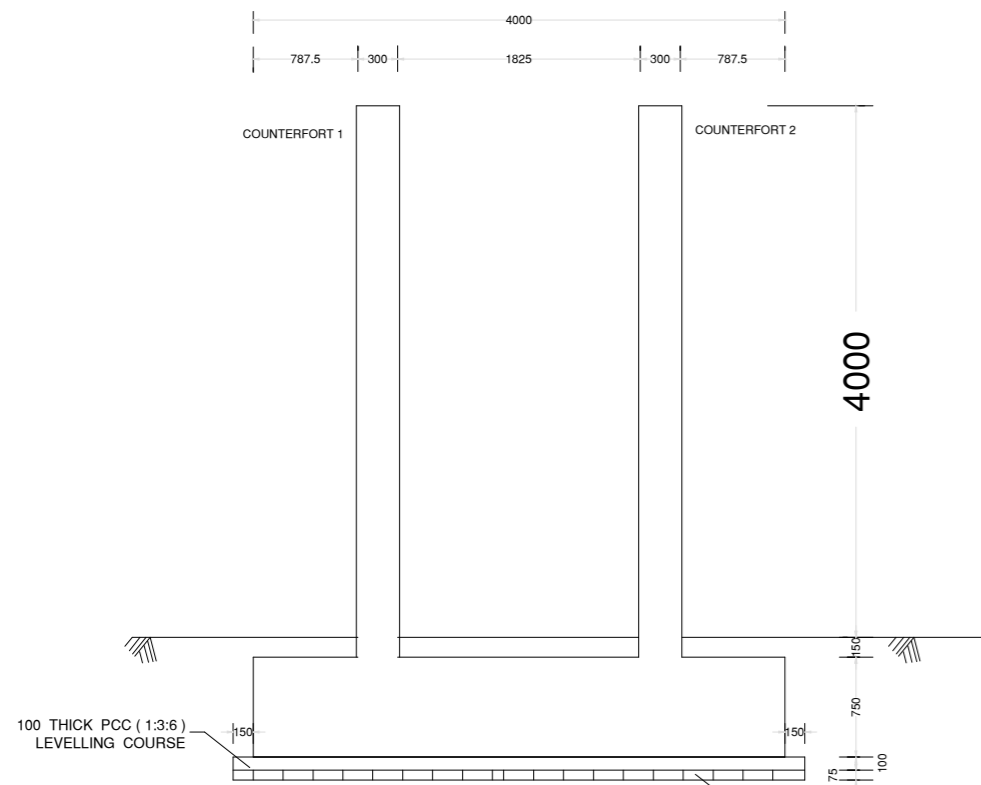
ASSAM POWER GENERATION CORPORATION LTD.	
OFFICE OF THE CHIEF GENERAL MANAGER (HYDRO & CIVIL), BIJULEE BHAWAN, GHY-01	
STONE MASONARY RETAINING WALL NEAR INTAKE STRUCTURE	
SECTIONAL ELEVATION OF THE PROPOSED STONE MASONARY WALL NEAR INTAKE STRUCTURE	
DRAWN BY:	APPROVED BY:
K. TALUKDAR	R. BISWANATH, CGM (H&C)
DRG. NO. CGM(H&C)/INTAKE PROTECTION/KLHEP/2020/05	
DATE	FEBRUARY, 2020



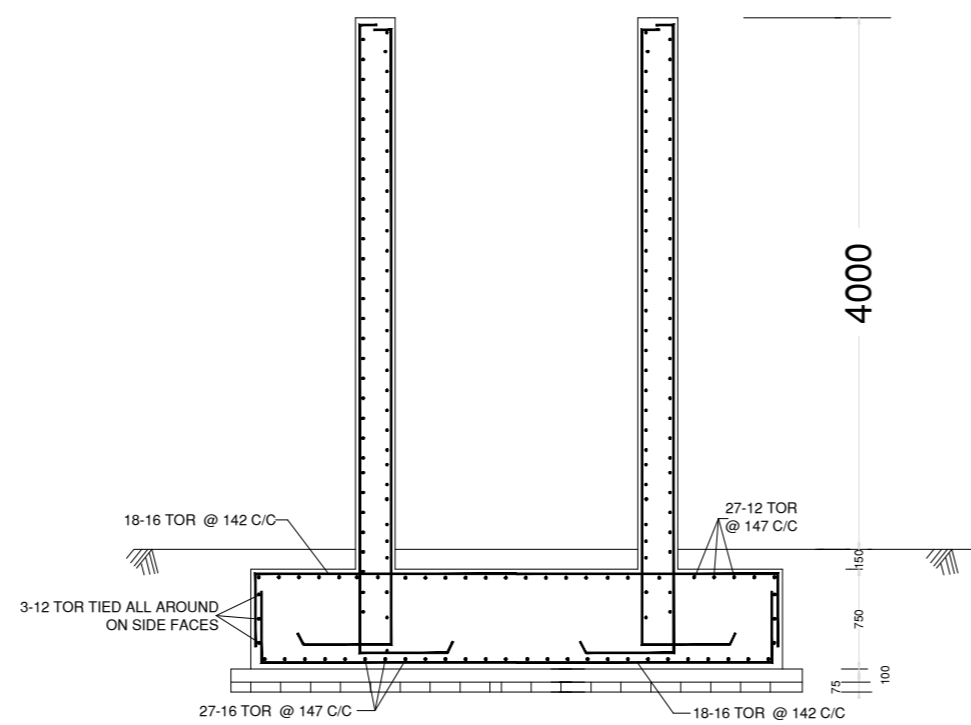
PLAN OF RETAINING WALL 3



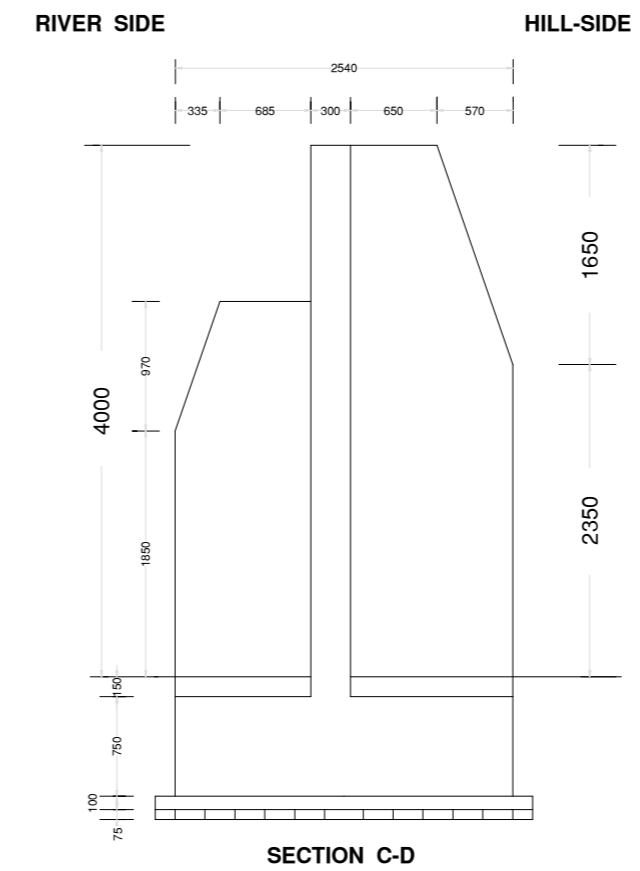
FOUNDATION PLAN
POSITION OF ANGULAR IRON VERTICAL STAKES
VERTICAL STAKES ARE ISA 100x100 x10, 3500 LONG, WITH 3000 EMBEDMENT IN GROUND
THE EXTERNAL STAKES SHALL BE CONNECTED WITH ISA 50x50x50 WITH 5 mm FILLET WELD



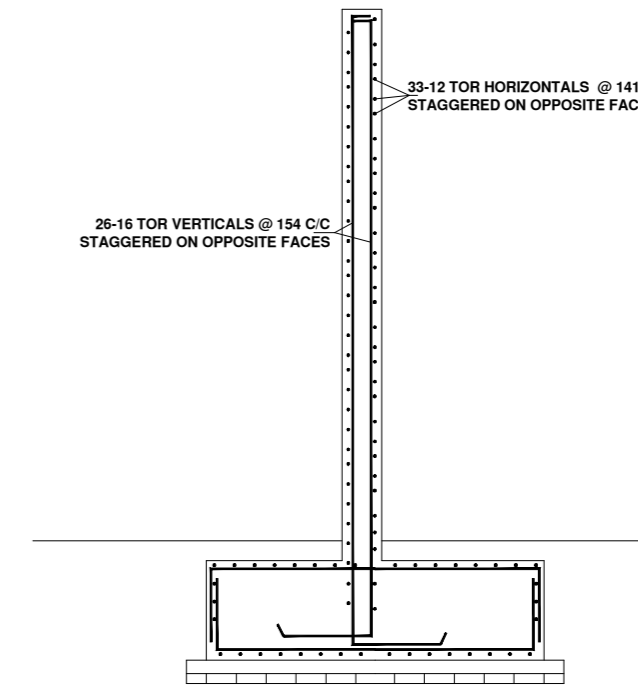
SECTION E-F



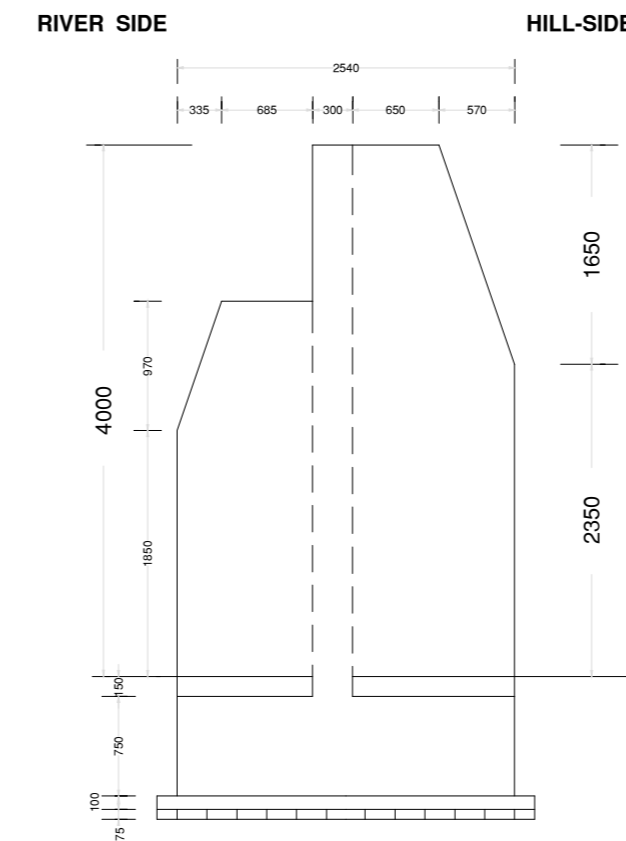
SECTION E-F WITH RE-BAR DETAIL
WITH RE-BAR DETAIL IN BASE SLAB & COUNTERFORTS



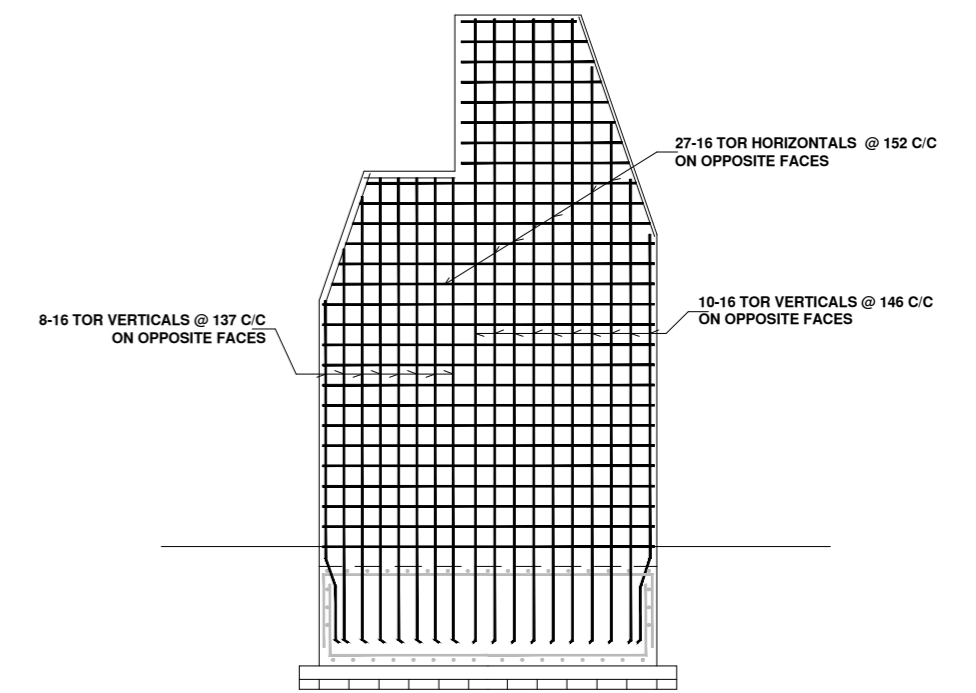
SECTION C-D



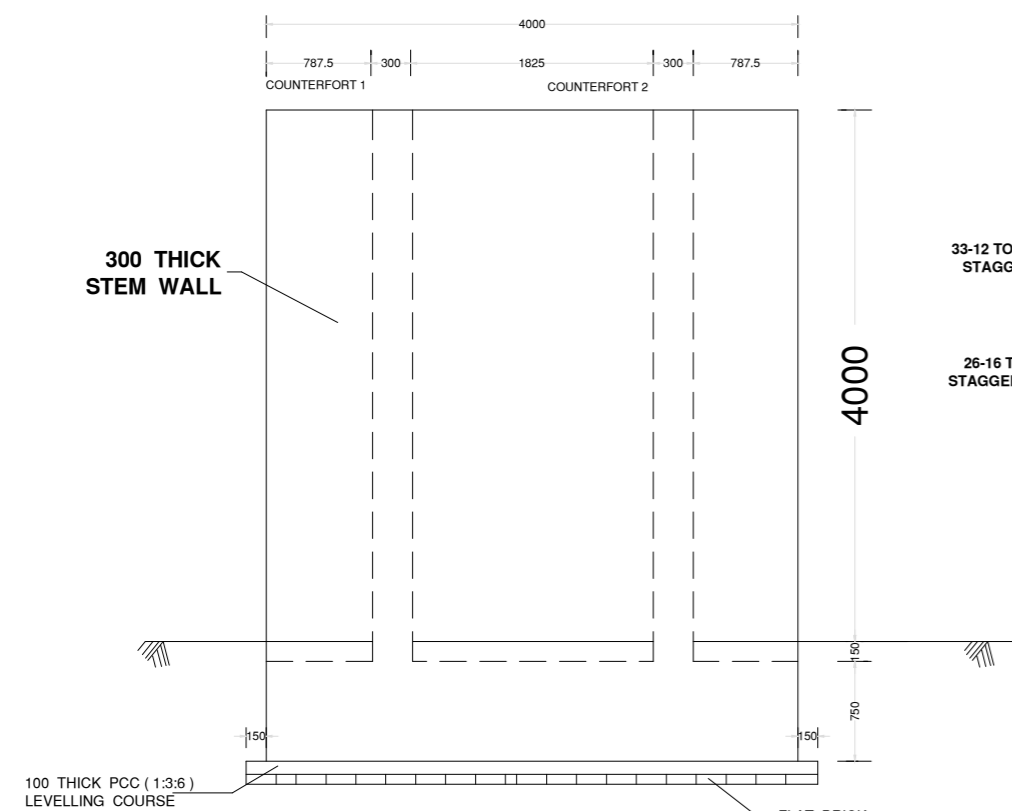
SECTION C-D
WITH RE-BAR DETAIL IN 300 WIDE STEM WALL



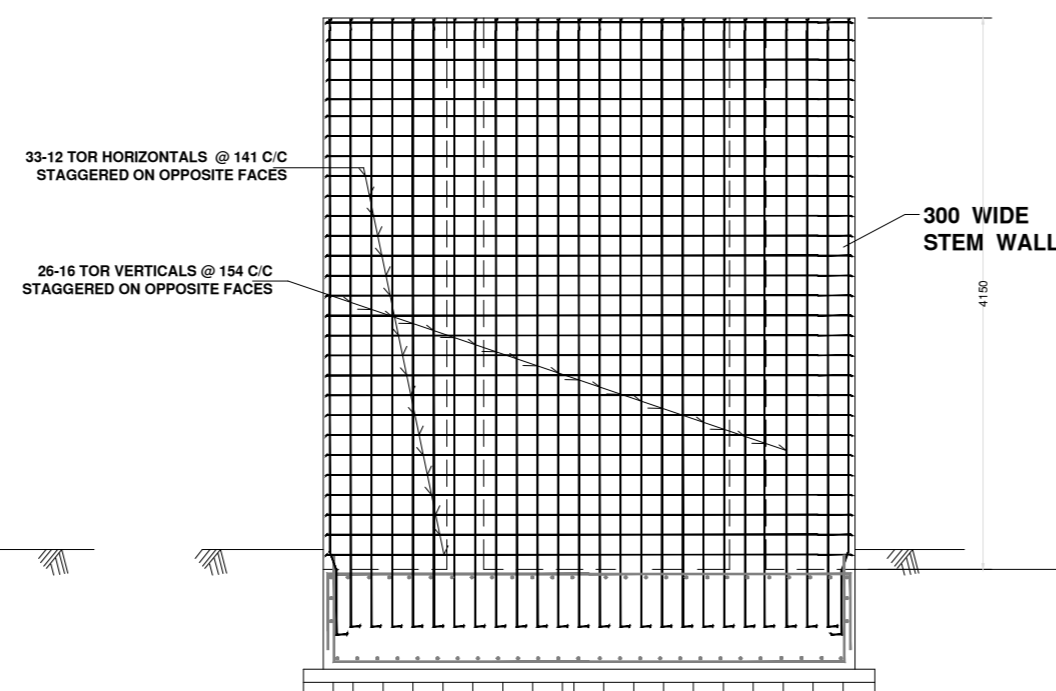
SECTION A-B
THROUGH COUNTERFORT WALL



SECTION A-B
WITH RE-BAR DETAIL IN COUNTERFORT



SECTION G-H

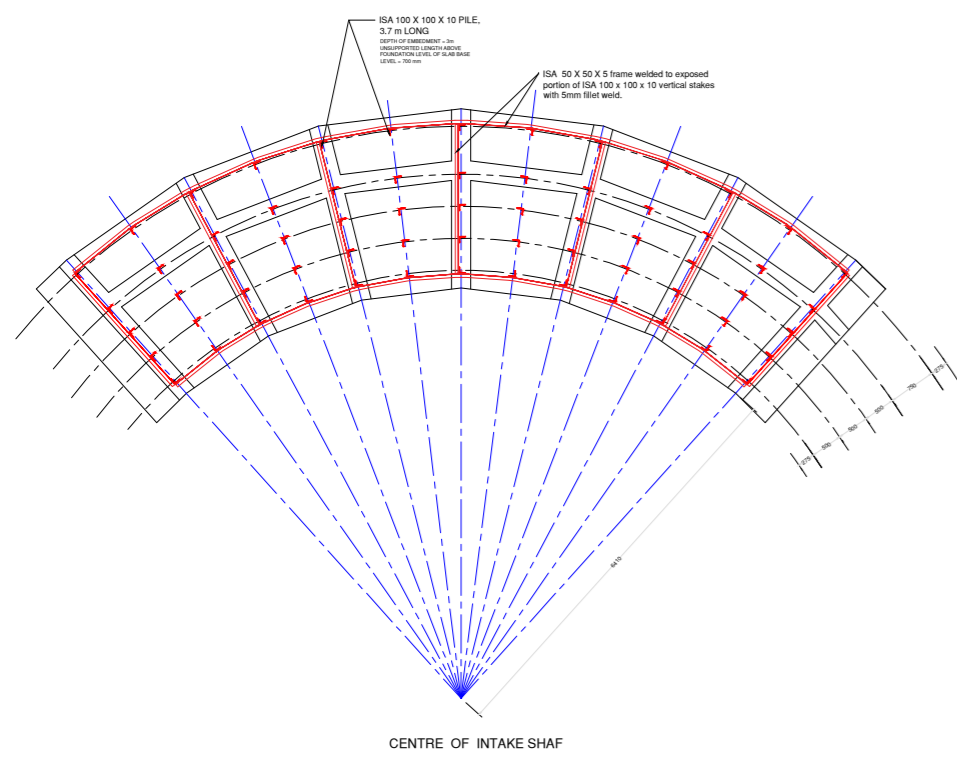


SECTION G-H
WITH RE-BAR DETAIL IN 300 WIDE STEM WALL

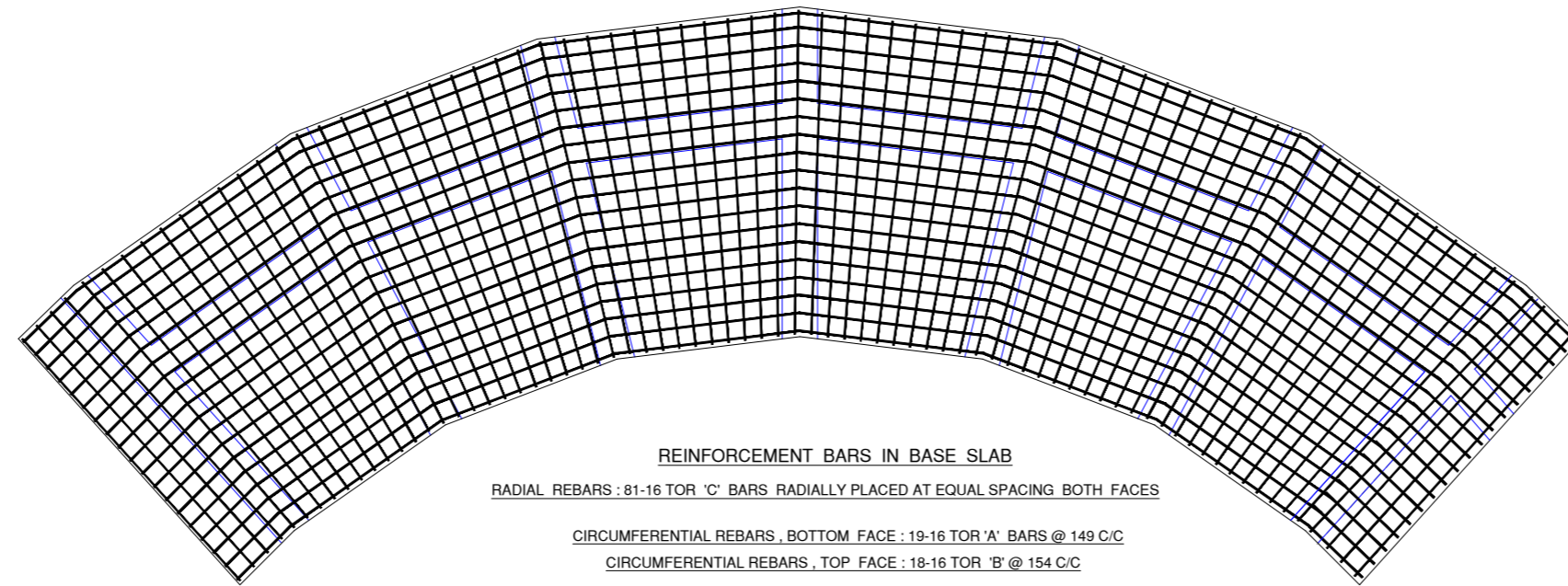
GENERAL NOTE FOR CONSTRUCTION

- * ALL RCC WORK SHALL BE CAST WITH M20 GRADE OF CONCRETE (NOMINAL MIX OF 1:1.5:3)
- * COARSE AGGREGATE OF 20 mm DOWN SIZE SHOULD BE USED IN CONCRETE MIX ..
- * CLEAR COVER TO REINFORCEMENT :
TO MAIN STEEL OF STEM WALL, COUNTER-FORT WALL AND BUTTRESS : 30 mm
TO MAIN STEEL OF SLAB BASE : 50 mm ON ALL SIDES .
- * UNLESS AND OTHERWISE SPECIFIED ALL DIMENSIONS ARE IN mm AND ONLY WRITTEN DIMENSIONS SHOULD BE FOLLOWED.
- * IN ALL CONCRETE STRUCTURES, HOOK LENGTH OF CONCRETE REINFORCEMENT SHOULD BE ATLEAST 75mm.
- * IN ALL CONCRETE STRUCTURES, DEVELOPMENT LENGTH (Ld) OF REINFORCEMENT SHOULD BE ATLEAST 50 TIMES THE DIAMETER OF BAR.

ASSAM POWER GENERATION CORPORATION LTD.	
OFFICE OF THE CHIEF GENERAL MANAGER (HYDRO & CIVIL), BIJULEE BHAWAN, GHY-01	
4m LONG RETAINING WALL STRUCTURE	
PLAN, SECTION AND REINFORCEMENT DETAIL OF 4m LONG RETAINING WALL STRUCTURE	
DRAWN BY: K. TALLIKDAR	APPROVED BY: R. BISWANATH, CGM (H&C)
DRG. NO. CGM(H&C)/INTAKE PROTECTION/KLHEP/2020/04	
DATE	FEBRUARY, 2020



POSITIONS OF VERTICAL STAKES OF ISA 100,100,10

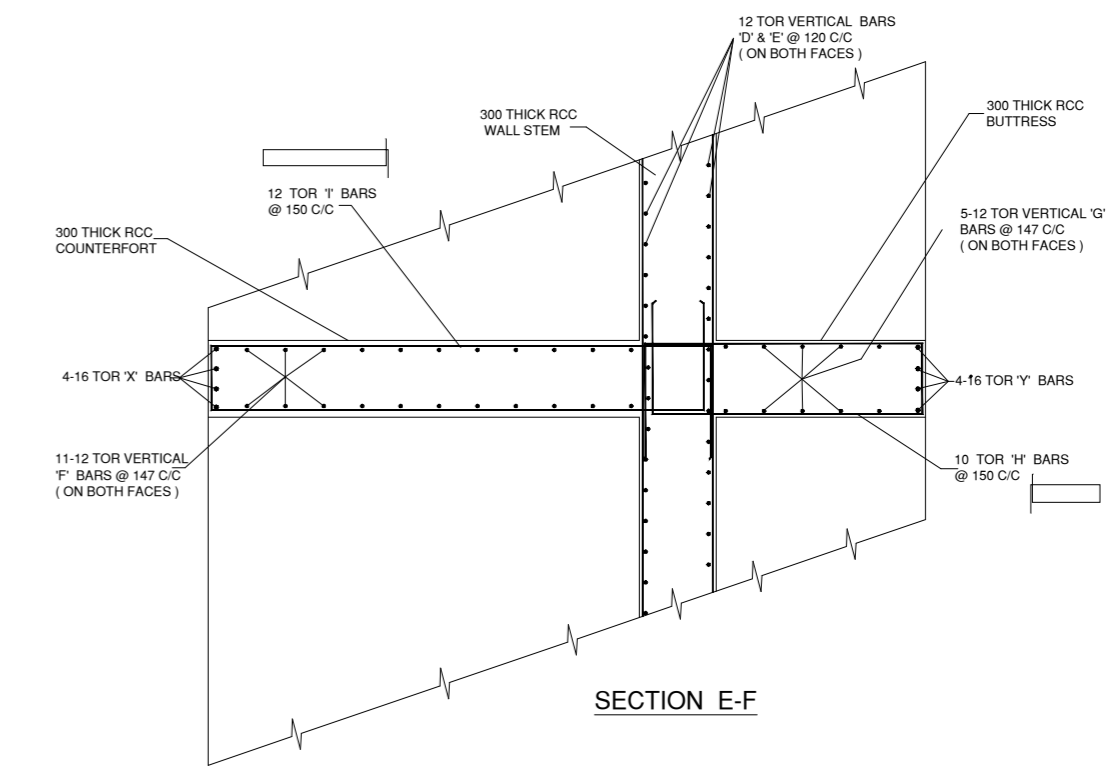


REINFORCEMENT BARS IN BASE SLAB

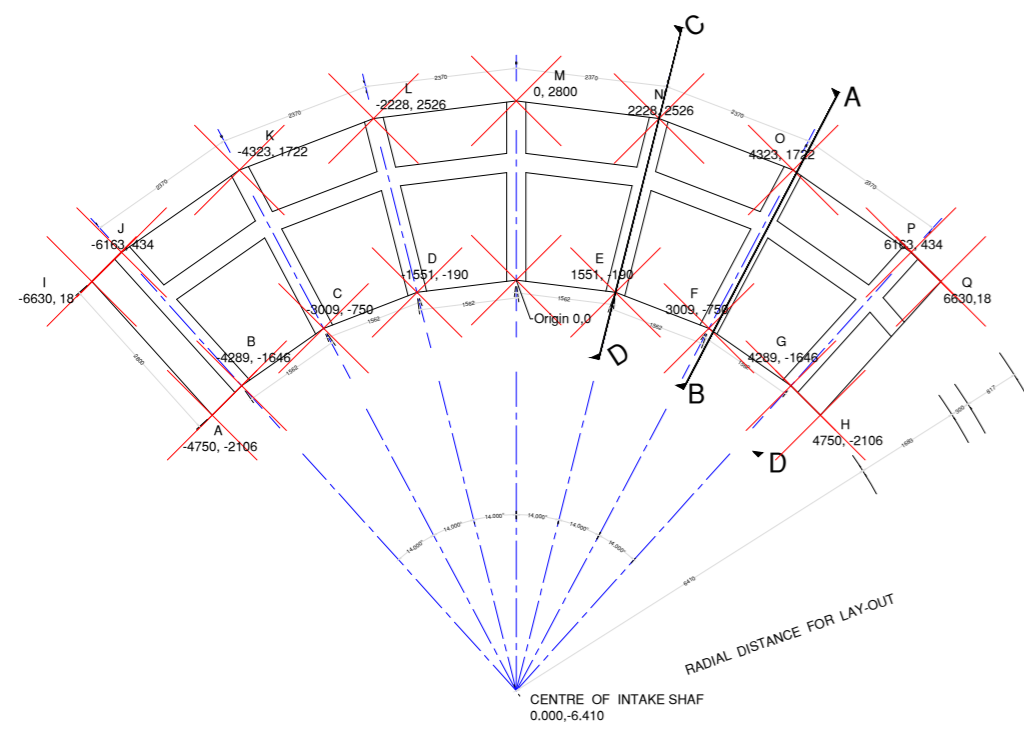
RADIAL REBARS : 81-16 TOR 'C' BARS RADIALLY PLACED AT EQUAL SPACING BOTH FACES

CIRCUMFERENTIAL REBARS , BOTTOM FACE : 19-16 TOR 'A' BARS @ 149 C/C

CIRCUMFERENTIAL REBARS , TOP FACE : 18-16 TOR 'B' @ 154 C/C



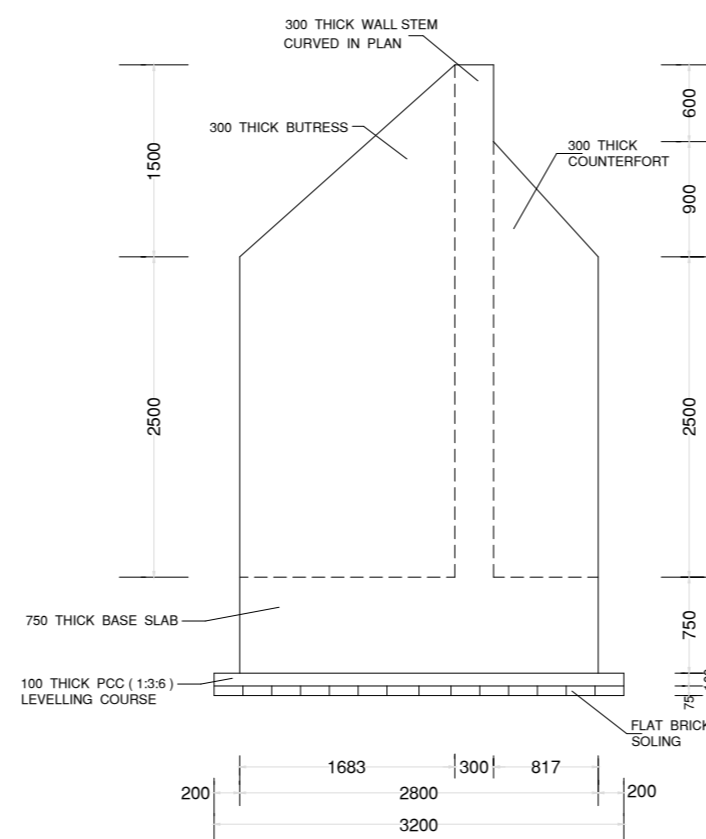
SECTION E-F



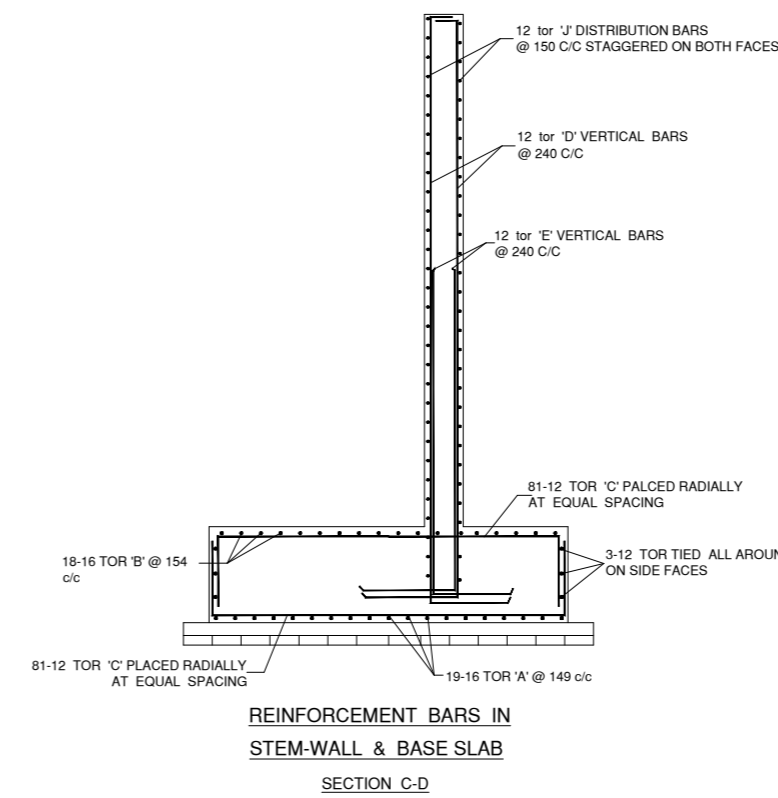
LAY-OUT PLAN
CURVED PROTECTION WALL AROUND INTAKE

CO-ORDINATES FOR LAY-OUT CONTROL POINTS

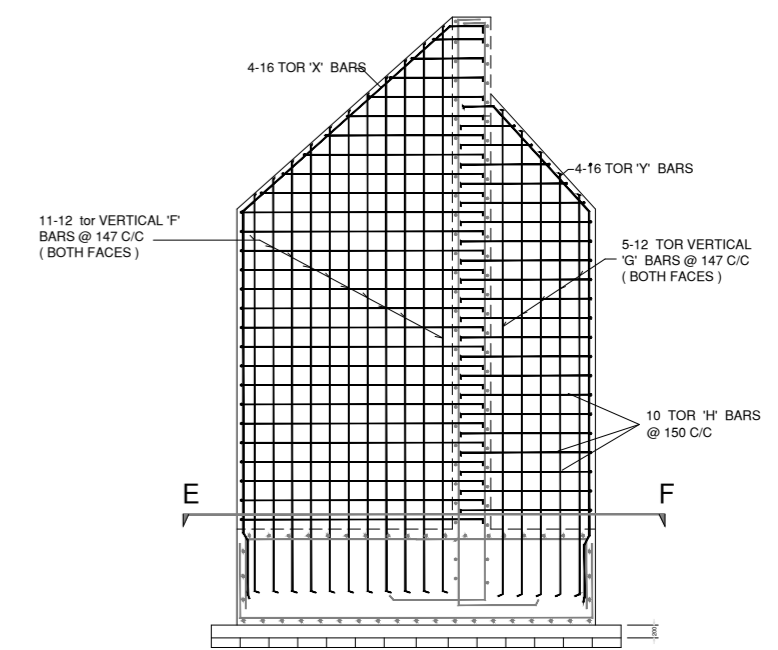
CONTROL POINTS	X COORDINATE(m)	Y COORDINATE(m)
A	-4.750	-2.106
B	-4.289	-1.646
C	-3.009	-0.750
D	-1.551	-0.190
E	1.551	-0.190
F	3.009	-0.750
G	4.289	-1.646
H	-4.750	-2.106
I	-6.630	0.018
J	-6.163	0.434
K	-4.323	1.722
L	-2.228	2.526
M	0.000	2.800
N	2.228	2.526
O	4.323	1.722
P	6.163	0.434
Q	6.630	0.018



DIMENSIONS OF SECTION A-B



REINFORCEMENT BARS IN
STEM-WALL & BASE SLAB
SECTION C-D

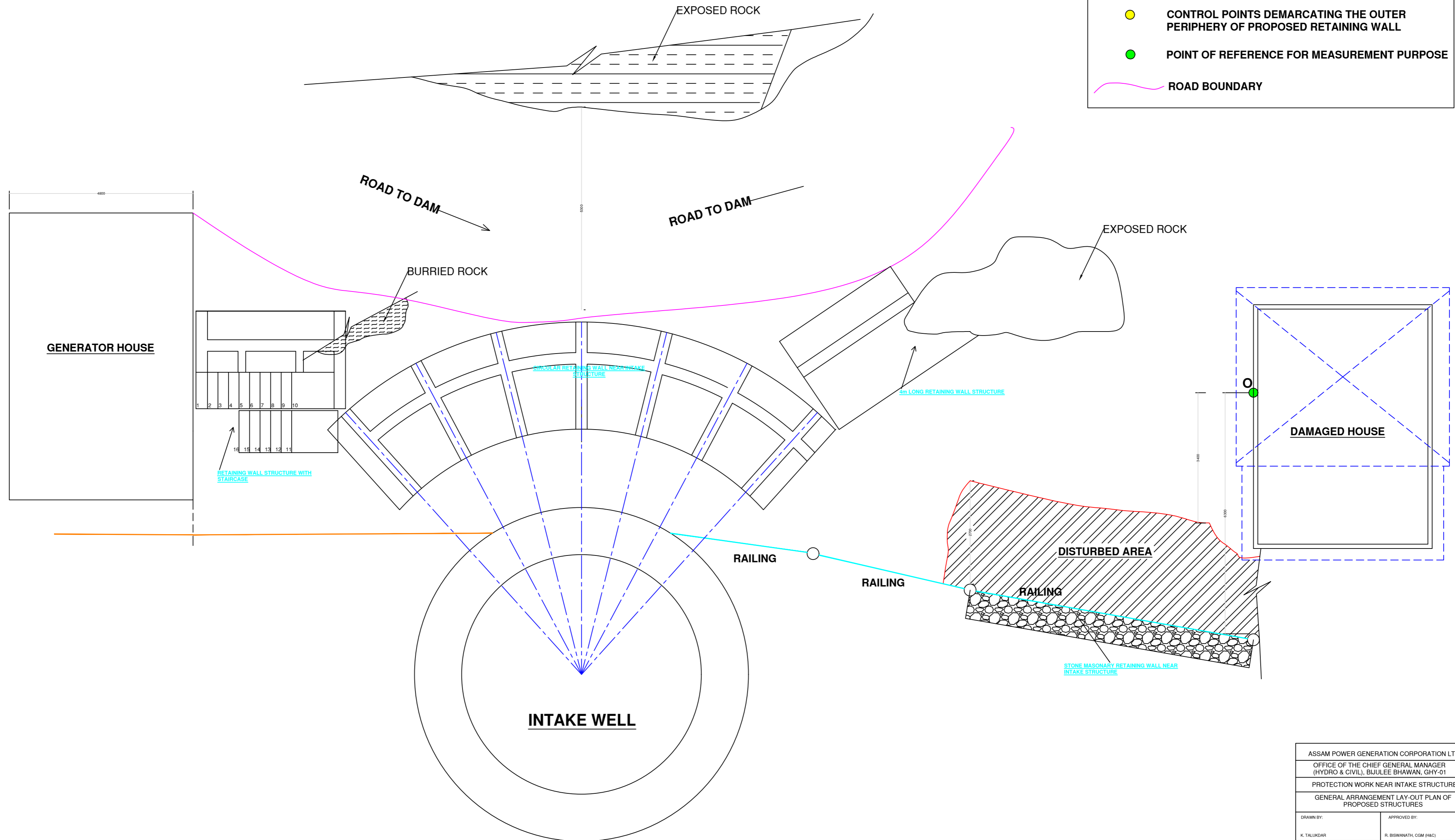
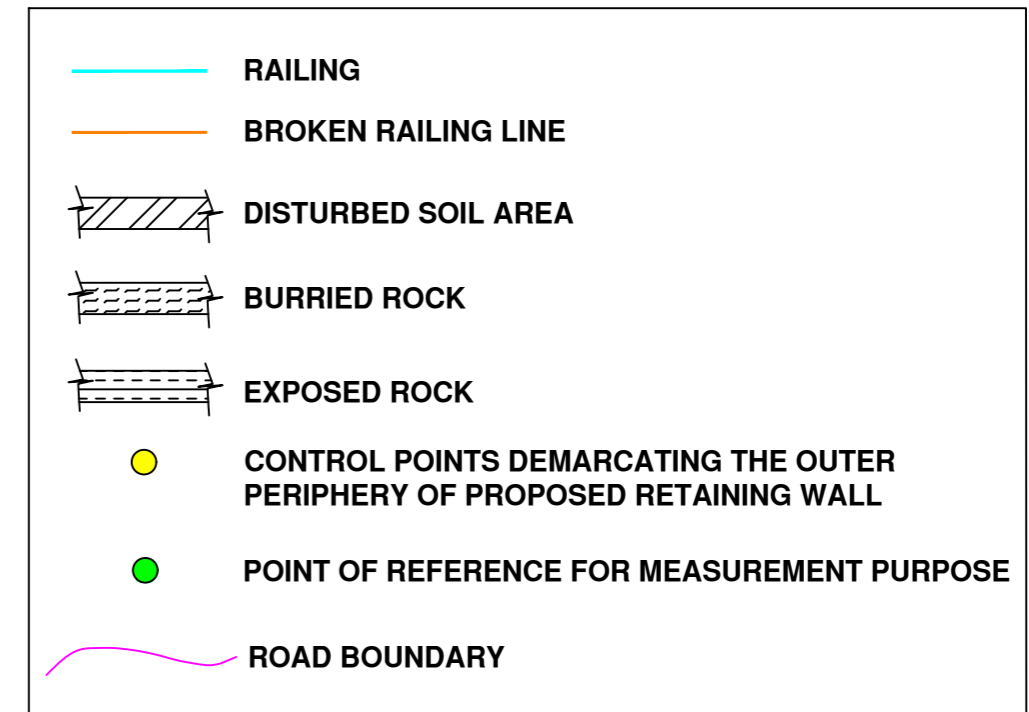


REINFORCEMENT BARS IN
COUNTERFORT & BUTTRESS
SECTION A-B

GENERAL NOTE FOR CONSTRUCTION

- ALL RCC WORK SHALL BE CAST WITH M20 GRADE OF CONCRETE (NOMINAL MIX OF 1:1.5:3)
- COARSE AGGREGATE OF 20 mm DOWN SIZE SHOULD BE USED IN CONCRETE MIX ..
- CLEAR COVER TO REINFORCEMENT :
TO MAIN STEEL OF STEM WALL, COUNTER-FORT WALL AND BUTTRESS : 30 mm
TO MAIN STEEL OF SLAB BASE : 50 mm ON ALL SIDES .
- UNLESS AND OTHERWISE SPECIFIED ALL DIMENSIONS ARE IN mm AND ONLY WRITTEN DIMENSIONS SHOULD BE FOLLOWED.
- IN ALL CONCRETE STRUCTURES, HOOK LENGTH OF CONCRETE REINFORCEMENT SHOULD BE ATLEAST 75mm.
- IN ALL CONCRETE STRUCTURES, DEVELOPMENT LENGTH (Ld) OF REINFORCEMENT SHOULD BE ATLEAST 50 TIMES THE DIAMETER OF BAR.

ASSAM POWER GENERATION CORPORATION LTD.	
OFFICE OF THE CHIEF GENERAL MANAGER (HYDRO & CIVIL), BIJULEE BHAWAN, GHY-01	
CIRCULAR RETAINING WALL NEAR INTAKE STRUCTURE	
PLAN, SECTION AND REINFORCEMENT DETAIL OF CIRCULAR RETAINING WALL	
DRAWN BY: K. TALUKDAR	APPROVED BY: R. BISWAMATHI, CGM (H&C)
DRG. NO. CGM(H&C)/INTAKE PROTECTION/KLHEP/2020/02	
DATE	FEBRUARY, 2020



ASSAM POWER GENERATION CORPORATION LTD.	
OFFICE OF THE CHIEF GENERAL MANAGER (HYDRO & CIVIL), BIJULEE BHAWAN, GHY-01	
PROTECTION WORK NEAR INTAKE STRUCTURE	
GENERAL ARRANGEMENT LAY-OUT PLAN OF PROPOSED STRUCTURES	
DRAWN BY:	APPROVED BY:
K. TALUKDAR	R. BISWANATH, CGM (H&C)
DRG. NO. CGM(H&C)INTAKE PROTECTION/KLHEP/2020/01	
DATE	FEBRUARY, 2020